

# West Sussex Growth Programme

**Nick Burrell**

Strategic Manager 2<sup>nd</sup> December

# Core Aims of the Programme

Each five-year tailor-made 'growth deal', identifies specific priority projects to bring local improvements for West Sussex residents, businesses and visitors that:

- are delivered - through 'growth programmes' - as part of a partnership approach between the public and private sectors
- promote local economic growth, including new homes and new jobs
- attract and bring together investment
- provide a clear set of formal working principles for how we will work together.
- Prioritise activity and resources.

*Growth Deals are now in place with all districts and boroughs in the county.*

# Some Headlines

---

## Programme Benefits –



**Jobs**



**Commercial  
Space**



**Homes**



**Improve public  
spaces**



**Sustainable  
Transport**



**Investment**

# Some Headlines

---

## Programme Funding Sources

**WSCC Growth Capital**

**OPE Revenue Funding**

**LEP Funding**

**D&B Funding**

**Match Funding**

# The Programmes

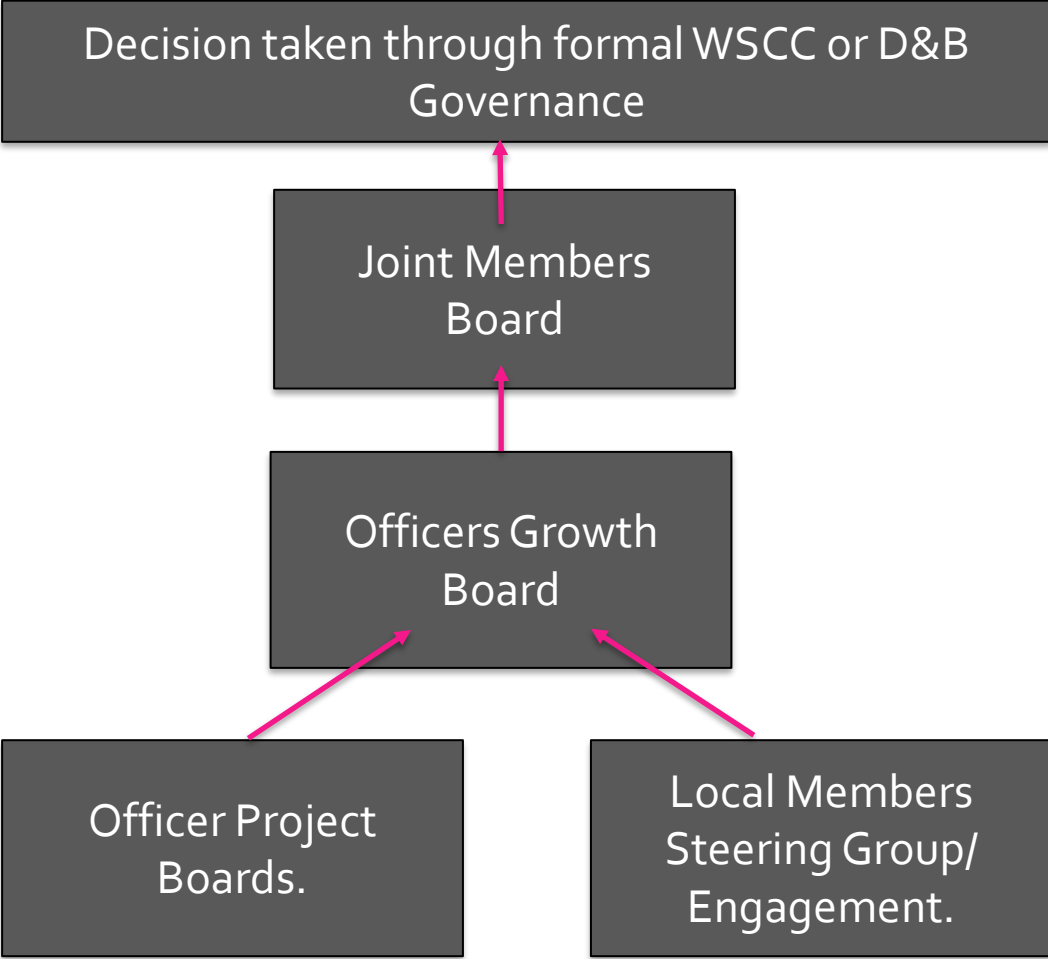
- 88 projects Across the deals
- Successful with attracting over £141m
- 47 project lead by WSCC (33 live)
- 8 projects delivered and 12 in construction.



# The Deals

- Deals are not all the same and are at different stages.
- These are long term initiatives with benefits realisation going into the 2030's.
- They are managed by a small team in the Place Directorate.
- The projects can sometimes be complex with a number of partners.
- Bring projects to an informed view for a 'stop go decision'.

# Growth Programme Structure & Governance



Decisions coming out of the below process would then be ratified by the normal governance of either or both authorities depending on the decision needed.

The Joint Members board, provided an opportunity to brief decision makers together before taking through the relevant governance, provide Member oversight to the deals/programme and provides an escalation point to resolve any issues within the deals.

The Officer Growth Board, provides joint oversight with the District or Borough for the projects within the deals/programme holding each other to account and managing performance.

The project boards provide officer oversight and management of the projects within the deals.  
The steering groups provides local members with an opportunity to provide a steer on the programme and assess the performance.



# Working in Partnership

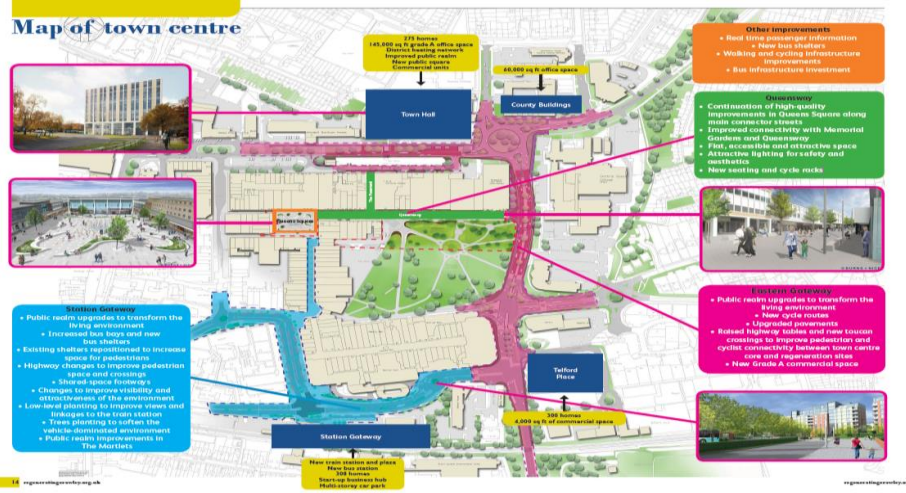
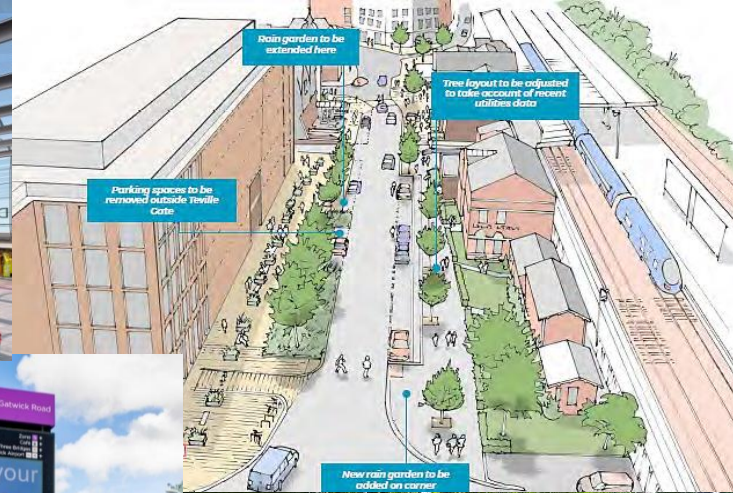
District / Borough	Signed Deal	Priorities	
Adur & Worthing	✓ (Mar 2017)	<ul style="list-style-type: none"> <li>• Worthing Town Centre – Public Realm</li> <li>• East Worthing Decoy Farm</li> <li>• New Monks Farm Shoreham Apt</li> </ul>	<ul style="list-style-type: none"> <li>• Shoreham Harbour</li> <li>• OPE Partnership Pond Rd</li> <li>• Centenary House</li> <li>• Gigabit</li> </ul>
Arun	✓ (Aug 2018)	<ul style="list-style-type: none"> <li>• Bognor Regis Town</li> <li>• Littlehampton Town</li> <li>• OPE Joint Blue light Centre</li> </ul>	<ul style="list-style-type: none"> <li>• Strategic Growth Priorities / Local Plan Infrastructure</li> </ul>
Chichester	✓ (Mar 2018)	<ul style="list-style-type: none"> <li>• Chichester Vision – West Street</li> <li>• Southern Gateway</li> </ul>	<ul style="list-style-type: none"> <li>• Northern Gateway</li> <li>• Gigabit</li> </ul>
Crawley	✓ (Dec 2016)	<ul style="list-style-type: none"> <li>• Queens Square and Queens Way</li> <li>• Eastern Gateway</li> <li>• Station Gateway</li> <li>• Manor Royal</li> </ul>	<ul style="list-style-type: none"> <li>• Gatwick Airport</li> <li>• Three Bridges Station</li> <li>• County Buildings</li> <li>• Crawley Fire Station</li> </ul>
Horsham	✓ (Oct 2018)	<ul style="list-style-type: none"> <li>• West and North of Horsham</li> <li>• Horsham Town Centre</li> </ul>	<ul style="list-style-type: none"> <li>• Hurst Road</li> <li>• Former Novartis Site</li> </ul>
Mid Sussex	✓ (Feb 2017)	<ul style="list-style-type: none"> <li>• Northern Arc</li> <li>• A2300</li> <li>• Sustainable Transport Package</li> </ul>	<ul style="list-style-type: none"> <li>• The Brow</li> <li>• New Library</li> <li>• Science and Tech Park</li> </ul>



# Key Milestones Achieved

District / Borough	Signed Deal	Key Priorities	<span style="color: orange;">■</span> Site investigation Viability <span style="color: yellow;">■</span> Detail Design <span style="color: green;">■</span> Delivered	<span style="color: grey;">■</span> Preliminary Design feasibility <span style="color: blue;">■</span> Construction
Adur & Worthing	✓ (Mar 2017)	<ul style="list-style-type: none"> <li>Worthing Town Centre Public Realm</li> <li>East Worthing Decoy Farm</li> <li>New Monks Farm Shoreham Apt</li> </ul>		<ul style="list-style-type: none"> <li>Shoreham Harbour</li> <li>OPE Partnership Pond Rd</li> <li>Centenary House</li> <li>Gigabit</li> </ul>
Arun	✓ (Aug 2018)	<ul style="list-style-type: none"> <li>Bognor Regis Town</li> <li>Littlehampton Town</li> <li>OPE Joint Blue light Centre</li> </ul>		<ul style="list-style-type: none"> <li>Strategic Growth Priorities / Local Plan Infrastructure</li> </ul>
Chichester	✓ (Mar 2018)	<ul style="list-style-type: none"> <li>Southern Gateway</li> <li>Chichester Vision – West Street</li> </ul>		<ul style="list-style-type: none"> <li>Northern Gateway</li> <li>Gigabit</li> </ul>
Crawley	✓ (Dec 2016)	<ul style="list-style-type: none"> <li>Queens Square and Queens Way</li> <li>Eastern Gateway</li> <li>Station Gateway</li> <li>Manor Royal</li> </ul>		<ul style="list-style-type: none"> <li>Gatwick Airport</li> <li>Three Bridges Station</li> <li>County Buildings</li> <li>Crawley Fire Station</li> </ul>
Horsham	✓ (Oct 2018)	<ul style="list-style-type: none"> <li>West and North of Horsham</li> <li>Horsham Town Centre</li> </ul>		<ul style="list-style-type: none"> <li>Former Novartis Site</li> <li>Hurst Road</li> </ul>
Mid Sussex	✓ (Feb 2017)	<ul style="list-style-type: none"> <li>Northern Arc</li> <li>A2300</li> <li>Sustainable Transport Package</li> </ul>		<ul style="list-style-type: none"> <li>The Brow</li> <li>New Library</li> <li>Science and Tech Park</li> </ul>

# Project Examples From The Programmes



## Learning

- Partnership working.
- Feasibility challenges with complex projects.
- Local vision and plans.
- Benefits realisation

## What's Next?

- The Pandemic, supply chain and market forces will have an impact on delivery.
- We will refresh the deals in Arun, Chichester and Crawley.
- Continue to link in with emerging priorities and strategies.